



PRETRIAL SERVICES AGENCY for the DISTRICT of COLUMBIA

LESLIE C. COOPER, Esq.
Director

633 Indiana Avenue, NW
Suite 1120
Washington, DC 20004

(202) 220-5500

www.PSA.gov

MEMORANDUM

TO: Interested Parties

FROM: Leslie C. Cooper *Leslie C. Cooper*

DATE: February 8, 2018

SUBJECT: **January 2018 Drug Testing Statistics**

EXECUTIVE COMMITTEE

HON. ANNA BLACKBURNE-
RIGSBY
Chair
Chief Judge
District of Columbia
Court of Appeals

HON. MERRICK B. GARLAND
Chief Judge
United States Court of Appeals
for the District of Columbia
Circuit

HON. BERYL A. HOWELL
Chief Judge
United States District Court
for the District of Columbia

HON. ROBERT E. MORIN
Chief Judge
Superior Court of the
District of Columbia

JAMES D. BERRY, JR.
Acting Director
Court Services and
Offender Supervision Agency
for the District of Columbia

HON. JESSIE K. LIU
United States Attorney
for the District of Columbia

AVIS E. BUCHANAN, Esq.
Director
Public Defender Service
for the District of Columbia

The rate of positive results from drug testing of adult arrestees for January 2018 decreased by 3% when compared to last month, with an overall positive test rate of 25%. Multi-drug positives, cocaine, amphetamines, PCP and synthetic cannabinoids each revealed a 1% decrease. Opiates and heroin remained consistent.

If you have any questions or need additional information, please contact us at contact@psa.gov. Historical reports dating to 1996 can be accessed at www.psa.gov in the *Reading Room*, which can be accessed under the *Resources* tab.

The breakdown of January 2018 adult test results is as follows:

No. Tests/No. Positive	December 2017		January 2018	
	As % of All Tests	As % of All Positives	As % of All Tests	As % of All Positives
Multi-Drug Positive	72 (6%)	72 (20%)	73 (5%)	73 (21%)
Cocaine Positive	165 (13%)	165 (45%)	166 (12%)	166 (47%)
Opiates Positive	70 (5%)	70 (19%)	74 (5%)	74 (21%)
Amphetamines Positive	28 (2%)	28 (8%)	15 (1%)	15 (4%)
PCP Positive	124 (10%)	124 (34%)	120 (9%)	120 (34%)
Heroin Positive	8 (1%)	8 (2%)	8 (1%)	8 (2%)
Synthetic Cannabinoid Positive	30 (2%)	30 (8%)	20 (1%)	20 (6%)

January 2018 Tests		
All Negative	1035	75%
Any Positive	362	25%
Total	1387	100%

January 2018 Juvenile Drug Testing Statistics

The positive rate for juvenile drug testing for January 2018 increased by 17% when compared to last month.

	December 2017		January 2018	
Number Tested/ Number Positive	87/46	(53%)	61/43	(70%)
Multi-Drug Positive	2	(2%)	0	(0%)
Cocaine Positive	1	(1%)	0	(0%)
Marijuana Positive	46	(53%)	43	(70%)
PCP Positive	1	(1%)	0	(0%)

The Juvenile Drug Testing Unit tested 61 respondents prior to their appearance in January 2018. Of the 61 lockup cases, 43 (70%) tested positive for marijuana. No community cases were tested for the month of January.

	Community		Lockup		Combined	
All Negative	0	(0%)	18	(30%)	18	(30%)
Any Positive	0	(0%)	43	(70%)	43	(70%)
Total	0	(0%)	61	(100%)	61	(100%)

	Of the 0 Community Cases		Of the 61 Lockup Cases		Of the 61 Combined Cases		Of the 43 Positive Cases	
Multi-Drug Positive	-	(-%)	0	(0%)	0	(0%)	0	(0%)
Cocaine Positive	-	(-%)	0	(0%)	0	(0%)	0	(0%)
Marijuana Positive	-	(-%)	43	(70%)	43	(70%)	43	(100%)
PCP Positive	-	(-%)	0	(0%)	0	(0%)	0	(0%)

The following breakdown of age groups for both community and lockup cases was obtained through the Superior Court's records system, and correlated with the respondent's test result information.

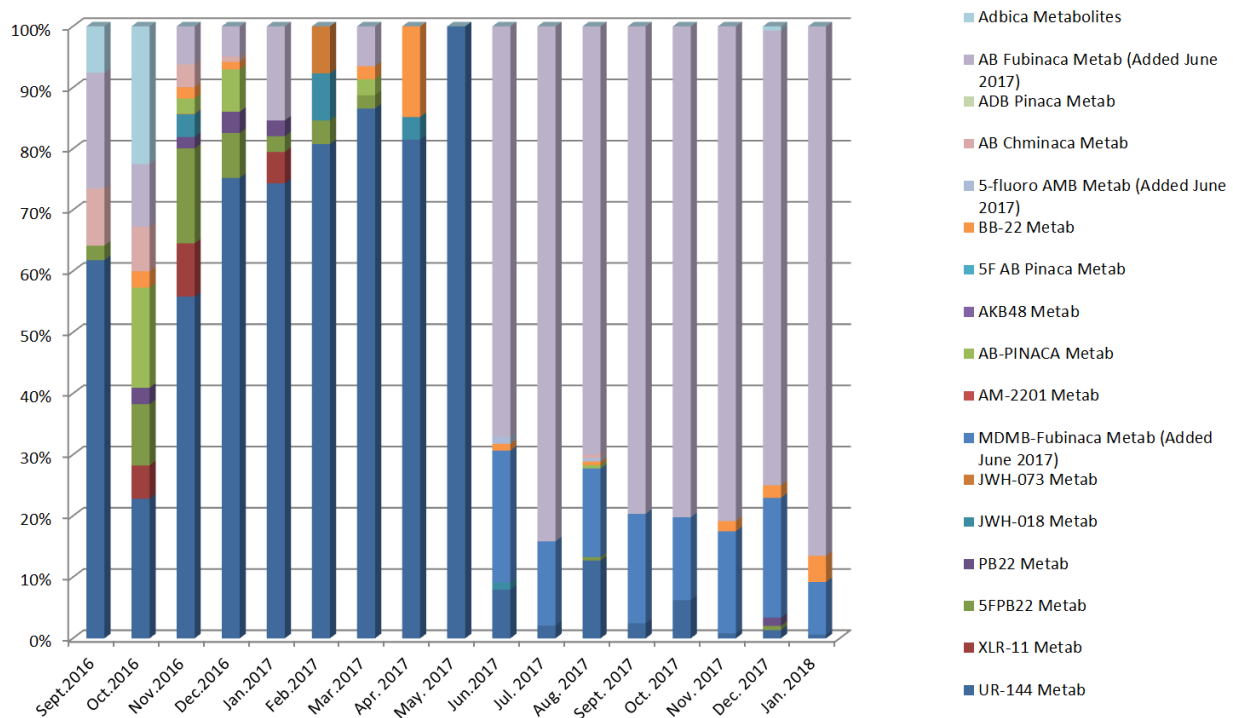
Age	Number of Arrestees Tested	Number Positive for Any Drug	Percent Positive for Any Drug
12	1	1	100%
13	3	2	67%
14	8	3	38%
15	7	4	57%
16	17	13	76%
17	24	19	79%
18-19	1	1	100%
Totals	61	43	70%

Synthetic Cannabinoid Testing Results for January 2018*

January 2018		
Positives	120	95.24%
Negatives	6	4.76%
Total	126	100%

	Number of Positive Analogues	Percentage of Positive Analogues	Percentage of Positive Samples
UR-144 Metabolites	1	.61%	.83%
*AB-FUBINACA Metabolites	141	86.50%	117.5%
**MDMB-FUBINACA Metabolite	14	8.59%	11.67%
BB-22 3-carboxyindole	7	4.29%	5.83%
Total	163	100%	135.76%

***Starting in July 2017, data is expressed as a percentage of total positive analogues instead of percentage of total samples. Data prior to July 2017 is expressed as a percentage of total samples. Test Performed by LCMSMS *Includes Metabolites 3 and 4 as of June 2017 **Added June 2017.



*These samples were obtained from the pretrial, parole/probation, and juvenile populations. The samples have been preselected by staff or the court for testing due to suspected use by the contributor.

Drug Testing of Adult Arrestees Feb 2017 - Jan 2018

