



DISTRICT OF COLUMBIA PRETRIAL SERVICES AGENCY

633 INDIANA AVENUE, N.W., SUITE 1120

WASHINGTON, DC 20004-2908

(202) 220-5500 • Fax: (202) 220-5655

SUSAN W. SHAFFER, ESQ.
Director

CLIFFORD T. KEENAN, ESQ.
Deputy Director

MEMORANDUM

TO: Interested Parties

FROM: Susan W. Shaffer

DATE: October 27, 2008

RE: September 2008 Juvenile Drug Testing Statistics

Drug testing of juvenile arrestees for September 2008 revealed a significant decrease in the level of substance abuse detected for marijuana, which was down 8% from August to 49%. The levels of substance abuse detected for amphetamines and PCP increased 1% each to 2% and 4%, respectively, while cocaine remained the same at 2%.

The Juvenile Drug Testing Unit tested 253 respondents prior to their initial hearing in September. Fifty-two percent (104) of the 201 Lockup cases tested positive. Forty-four percent (23) of the 52 Community cases tested positive. The combined positive rate was 50%.

	<u>COMMUNITY</u>	<u>LOCKUP</u>	<u>COMBINED</u>
ALL NEGATIVE	29 (56%)	97 (48%)	126 (50%)
ANY POSITIVE	<u>23 (44%)</u>	<u>104 (52%)</u>	<u>127 (50%)</u>
TOTAL	52	201	253

EXECUTIVE COMMITTEE

HONORABLE ERIC T. WASHINGTON, Chief Judge, District of Columbia Court of Appeals, Chair • HONORABLE DAVID B. SENTELLE, Chief Judge, United States Court of Appeals for the District of Columbia Circuit • HONORABLE ROYCE C. LAMBERTH, Chief Judge, United States District Court for the District of Columbia • HONORABLE LEE F. SATTERFIELD, Chief Judge, Superior Court of the District of Columbia • ADRIENNE POTEAT, Acting Director, Court Services and Offender Supervision Agency • JEFFREY A. TAYLOR, ESQ., United States Attorney • AVIS BUCHANAN, ESQ., Director, D.C. Public Defender Service

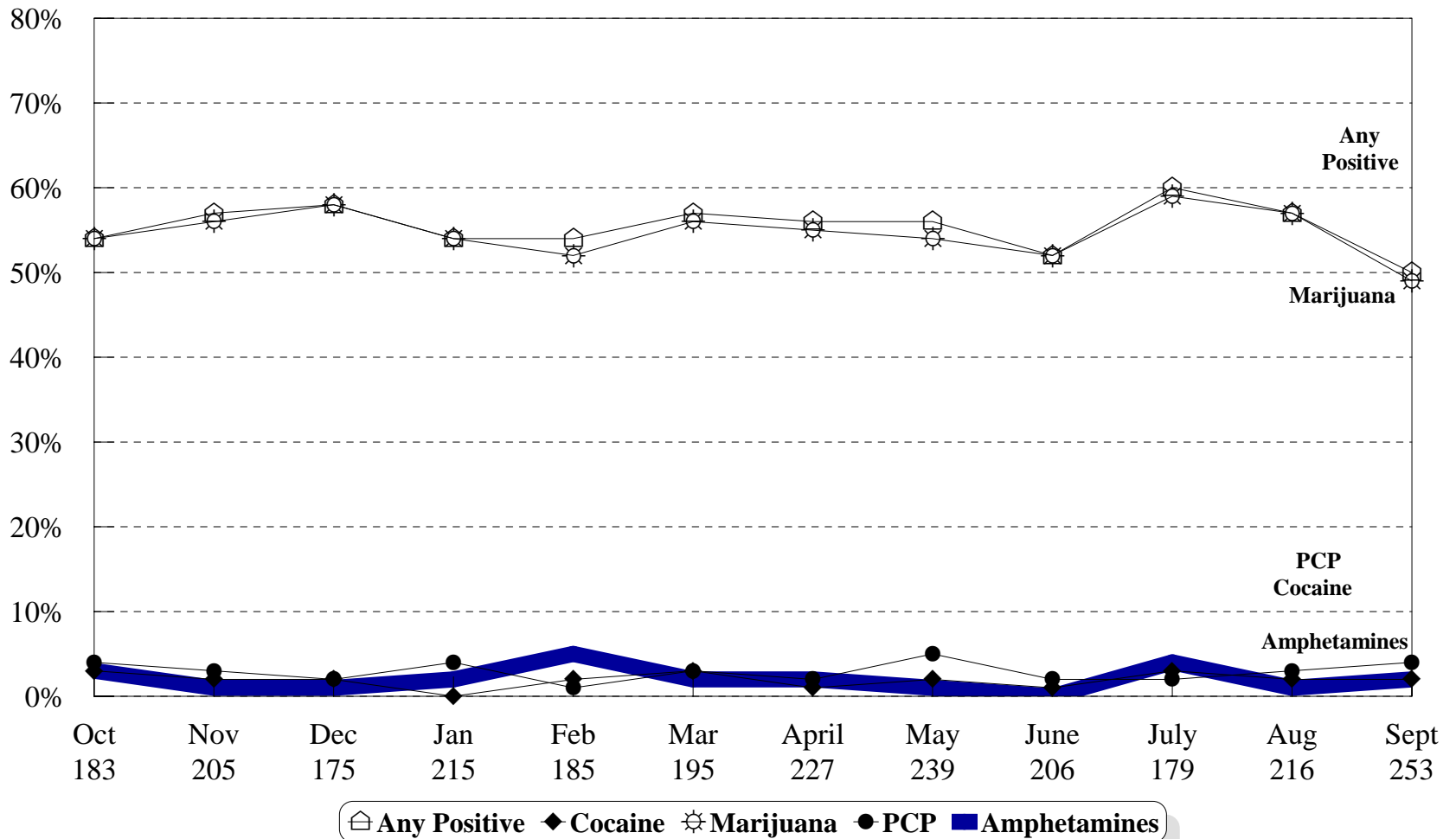
	Of the 52 Community Cases	Of the 201 Lockup Cases	Of the 253 Combined Cases	Of the 127 Positive Cases
Multi Positive	3 (6%)	10 (5%)	13 (5%)	13 (10%)
Cocaine Positive	1 (2%)	4 (2%)	5 (2%)	5 (4%)
Marijuana Positive	23 (44%)	100 (50%)	123 (49%)	123 (97%)
Amphetamines Positive	0	4 (2%)	4 (2%)	4 (3%)
PCP Positive	2 (4%)	7 (3%)	9 (4%)	9 (7%)

The following breakdown of age groups for both Community and Lockup cases was obtained through the Superior Court's records system and correlated with the respondent's test result information.

Age	No. of Arrestees Tested	No. Positive for Any Drug	% Positive for Any Drug
12	7	3	43%
13	12	4	33%
14	30	9	30%
15	66	31	47%
16	67	36	54%
17	69	42	61%
18-19	2	2	100%

Drug Testing of Juvenile Respondents

October 2007 - September 2008



This data reflects results of the drug test conducted prior to the juvenile's initial court hearing.