



# DISTRICT OF COLUMBIA PRETRIAL SERVICES AGENCY

633 INDIANA AVENUE, N.W., SUITE 1120

WASHINGTON, DC 20004-2908

(202) 220-5500 • Fax: (202) 220-5655

SUSAN W. SHAFFER, ESQ.  
Director

CLIFFORD T. KEENAN, ESQ.  
Deputy Director

## MEMORANDUM

TO: Interested Parties

FROM: Susan W. Shaffer

DATE: January 8, 2010

RE: November 2009 Juvenile Drug Testing Statistics

Drug testing of juvenile arrestees for November 2009 revealed a significant decrease in the levels of substance abuse detected for marijuana, PCP and amphetamines, which were down 5%, 3% and 1% from October to 48%, 0% and 0%, respectively. The level of substance abuse detected for cocaine increased from 0% to 1%.

The Juvenile Drug Testing Unit tested 246 respondents prior to their initial hearing in November. Fifty percent (106) of the 211 Lockup cases tested positive. Thirty-seven percent (13) of the 35 Community cases tested positive. The combined positive rate was 48%, down 6% from the previous month.

	<u>COMMUNITY</u>	<u>LOCKUP</u>	<u>COMBINED</u>
<b>ALL NEGATIVE</b>	<b>22 (63%)</b>	<b>105 (50%)</b>	<b>127 (52%)</b>
<b>ANY POSITIVE</b>	<b><u>13</u> (37%)</b>	<b><u>106</u> (50%)</b>	<b><u>119</u> (48%)</b>
<b>TOTAL</b>	<b>35</b>	<b>211</b>	<b>246</b>

### EXECUTIVE COMMITTEE

HONORABLE ERIC T. WASHINGTON, Chief Judge, District of Columbia Court of Appeals, Chair • HONORABLE DAVID B. SENTELLE, Chief Judge, United States Court of Appeals for the District of Columbia Circuit • HONORABLE ROYCE C. LAMBERTH, Chief Judge, United States District Court for the District of Columbia • HONORABLE LEE F. SATTERFIELD, Chief Judge, Superior Court of the District of Columbia • ADRIENNE POTEAT, Acting Director, Court Services and Offender Supervision Agency • CHANNING D. PHILLIPS, ESQ., Acting United States Attorney • AVIS BUCHANAN, ESQ., Director, D.C. Public Defender Service

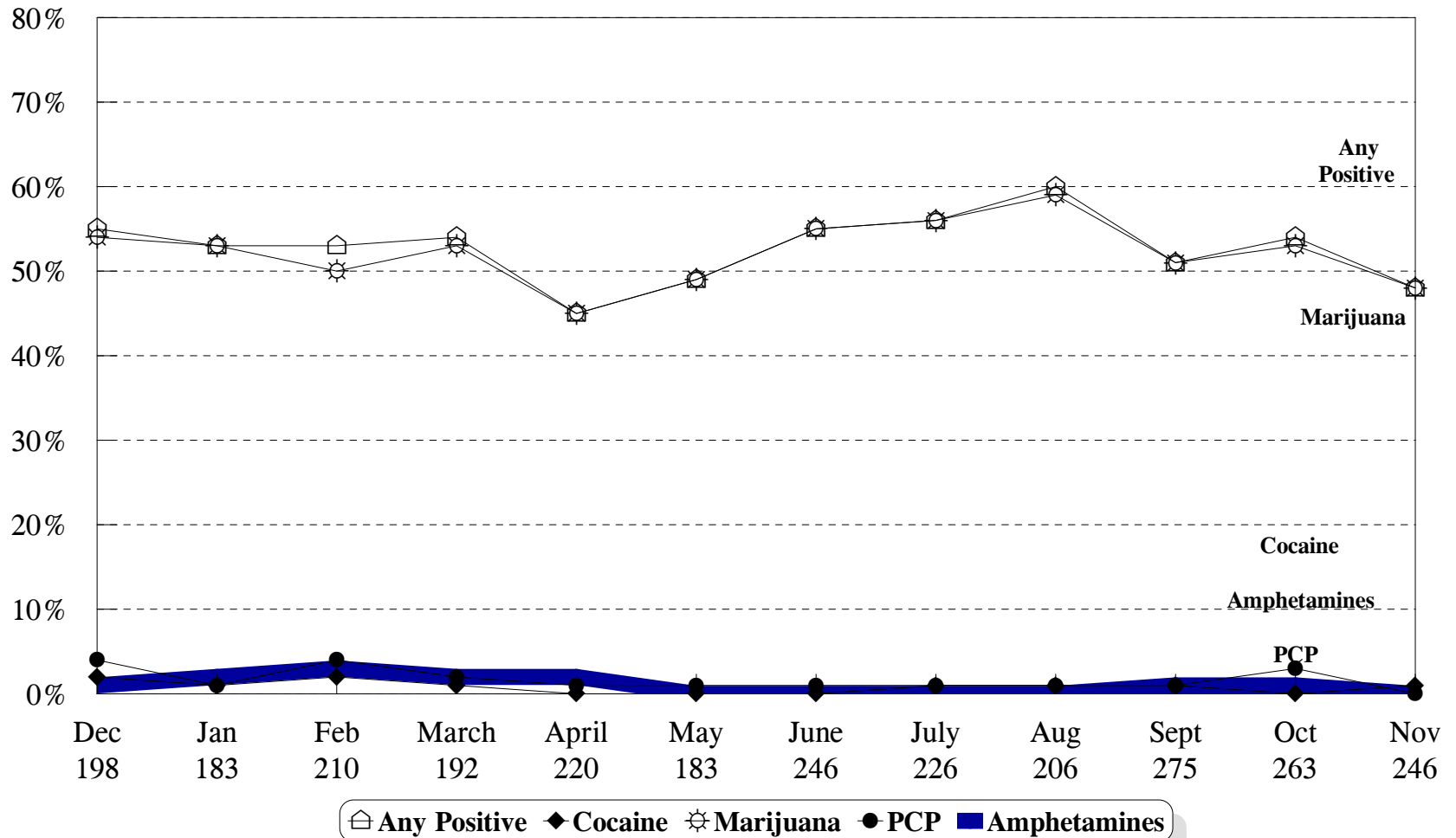
	<b>Of the 35 Community Cases</b>	<b>Of the 211 Lockup Cases</b>	<b>Of the 246 Combined Cases</b>	<b>Of the 119 Positive Cases</b>
<b>Multi Positive</b>	<b>1 (3%)</b>	<b>3 (1%)</b>	<b>4 (2%)</b>	<b>4 (3%)</b>
<b>Cocaine Positive</b>	<b>0</b>	<b>3 (1%)</b>	<b>3 (1%)</b>	<b>3 (3%)</b>
<b>Marijuana Positive</b>	<b>13 (37%)</b>	<b>106 (50%)</b>	<b>119 (48%)</b>	<b>119 (100%)</b>
<b>Amphetamines Positive</b>	<b>0</b>	<b>0</b>	<b>0</b>	<b>0</b>
<b>PCP Positive</b>	<b>1 (3%)</b>	<b>0</b>	<b>1 (0%)</b>	<b>1 (0%)</b>

The following breakdown of age groups for both Community and Lockup cases was obtained through the Superior Court's records system and correlated with the respondent's test result information.

<b>Age</b>	<b>No. of Arrestees Tested</b>	<b>No. Positive for Any Drug</b>	<b>% Positive For Any Drug</b>
<b>11</b>	<b>3</b>	<b>0</b>	<b>0%</b>
<b>12</b>	<b>5</b>	<b>0</b>	<b>0%</b>
<b>13</b>	<b>10</b>	<b>2</b>	<b>20%</b>
<b>14</b>	<b>32</b>	<b>12</b>	<b>36%</b>
<b>15</b>	<b>53</b>	<b>24</b>	<b>45%</b>
<b>16</b>	<b>63</b>	<b>32</b>	<b>51%</b>
<b>17</b>	<b>68</b>	<b>41</b>	<b>60%</b>
<b>18-19</b>	<b>12</b>	<b>8</b>	<b>67%</b>

# Drug Testing of Juvenile Respondents

December 2008 - November 2009



This data reflects results of the drug test conducted prior to the juvenile's initial court hearing.