



DISTRICT OF COLUMBIA PRETRIAL SERVICES AGENCY

633 INDIANA AVENUE, N.W., SUITE 1120

WASHINGTON, DC 20004-2908

(202) 220-5500 • Fax: (202) 220-5655

SUSAN W. SHAFFER, ESQ.
Director

CLIFFORD T. KEENAN, ESQ.
Deputy Director

MEMORANDUM

TO: Interested Parties

FROM: Susan W. Shaffer

DATE: May 6, 2009

RE: March 2009 Juvenile Drug Testing Statistics

Drug testing of juvenile arrestees for March 2009 revealed an increase in the level of substance abuse detected for marijuana, which was up 3% from February to 53%. The levels of substance abuse detected for cocaine and amphetamines decreased by 1% each to 1% and 2%, respectively, while PCP decreased by 2%, to 2%.

The Juvenile Drug Testing Unit tested 192 respondents prior to their initial hearing in March. Fifty-eight percent (95) of the 164 Lockup cases tested positive. Thirty-two percent (9) of the 28 Community cases tested positive. The combined positive rate was 54%.

	<u>COMMUNITY</u>	<u>LOCKUP</u>	<u>COMBINED</u>
ALL NEGATIVE	19 (68%)	69 (42%)	88 (46%)
ANY POSITIVE	<u>9</u> (32%)	<u>95</u> (58%)	<u>104</u> (54%)
TOTAL	28	164	192

EXECUTIVE COMMITTEE

HONORABLE ERIC T. WASHINGTON, Chief Judge, District of Columbia Court of Appeals, Chair • HONORABLE DAVID B. SENTELLE, Chief Judge, United States Court of Appeals for the District of Columbia Circuit • HONORABLE ROYCE C. LAMBERTH, Chief Judge, United States District Court for the District of Columbia • HONORABLE LEE F. SATTERFIELD, Chief Judge, Superior Court of the District of Columbia • ADRIENNE POTEAT, Acting Director, Court Services and Offender Supervision Agency • JEFFREY A. TAYLOR, ESQ., United States Attorney • AVIS BUCHANAN, ESQ., Director, D.C. Public Defender Service

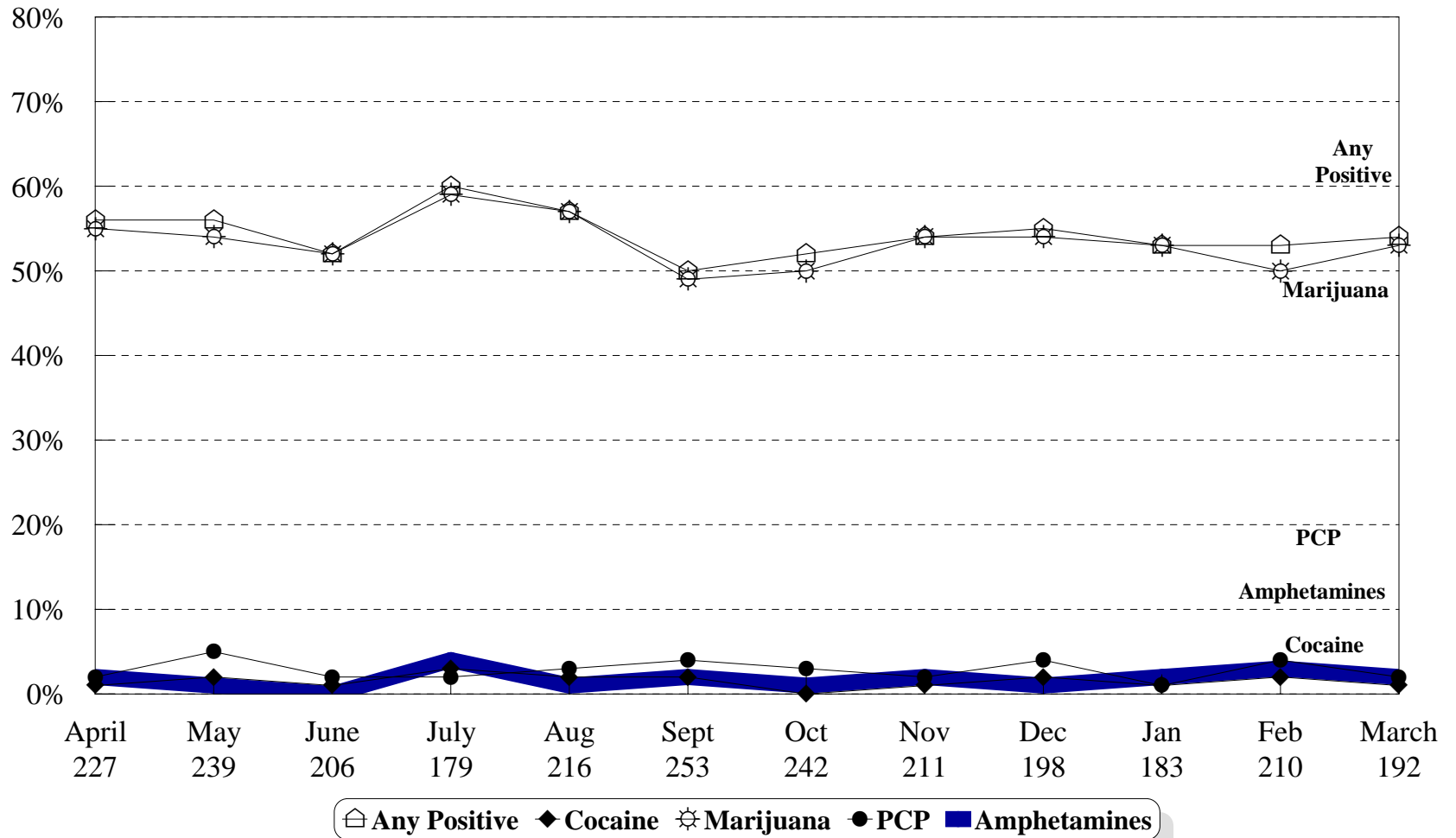
	Of the 28 Community Cases	Of the 164 Lockup Cases	Of the 192 Combined Cases	Of the 104 Positive Cases
Multi Positive	0	5 (3%)	5 (3%)	5 (5%)
Cocaine Positive	0	1 (1%)	1 (1%)	1 (0%)
Marijuana Positive	8 (29%)	93 (57%)	101 (53%)	101 (97%)
Amphetamines Positive	0	4 (2%)	4 (2%)	4 (4%)
PCP Positive	1 (4%)	2 (1%)	3 (2%)	3 (3%)

The following breakdown of age groups for both Community and Lockup cases was obtained through the Superior Court's records system and correlated with the respondent's test result information.

Age	No. of Arrestees Tested	No. Positive for Any Drug	% Positive For Any Drug
11	1	0	0%
12	2	0	0%
13	12	5	42%
14	28	12	43%
15	36	18	50%
16	48	33	69%
17	60	33	56%
18-19	5	3	60%

Drug Testing of Juvenile Respondents

April 2008 - March 2009



This data reflects results of the drug test conducted prior to the juvenile's initial court hearing.