



# DISTRICT OF COLUMBIA PRETRIAL SERVICES AGENCY

633 INDIANA AVENUE, N.W., SUITE 1120

WASHINGTON, DC 20004-2908

(202) 220-5500 • Fax: (202) 220-5655

SUSAN W. SHAFFER, ESQ.  
Director

CLIFFORD T. KEENAN, ESQ.  
Deputy Director

## MEMORANDUM

TO: Interested Parties

FROM: Susan W. Shaffer

DATE: October 8, 2009

RE: August 2009 Juvenile Drug Testing Statistics

Drug testing of juvenile arrestees for August 2009 revealed an increase in the level of substance abuse detected for marijuana, which was up 3% from July to 59%. The levels of substance abuse detected for amphetamines, cocaine and PCP remained the same at 0%, 1% and 1%, respectively.

The Juvenile Drug Testing Unit tested 206 respondents prior to their initial hearing in August. Sixty percent (110) of the 182 Lockup cases tested positive. Fifty-eight percent (14) of the 24 Community cases tested positive. The combined positive rate was 60%.

	<b>COMMUNITY</b>	<b>LOCKUP</b>	<b>COMBINED</b>
<b>ALL NEGATIVE</b>	<b>10 (42%)</b>	<b>72 (40%)</b>	<b>82 (40%)</b>
<b>ANY POSITIVE</b>	<b><u>14 (58%)</u></b>	<b><u>110 (60%)</u></b>	<b><u>124 (60%)</u></b>
<b>TOTAL</b>	<b>24</b>	<b>182</b>	<b>206</b>

### EXECUTIVE COMMITTEE

HONORABLE ERIC T. WASHINGTON, Chief Judge, District of Columbia Court of Appeals, Chair • HONORABLE DAVID B. SENTELLE, Chief Judge, United States Court of Appeals for the District of Columbia Circuit • HONORABLE ROYCE C. LAMBERTH, Chief Judge, United States District Court for the District of Columbia • HONORABLE LEE F. SATTERFIELD, Chief Judge, Superior Court of the District of Columbia • ADRIENNE POTEAT, Acting Director, Court Services and Offender Supervision Agency • CHANNING D. PHILLIPS, ESQ., Acting United States Attorney • AVIS BUCHANAN, ESQ., Director, D.C. Public Defender Service

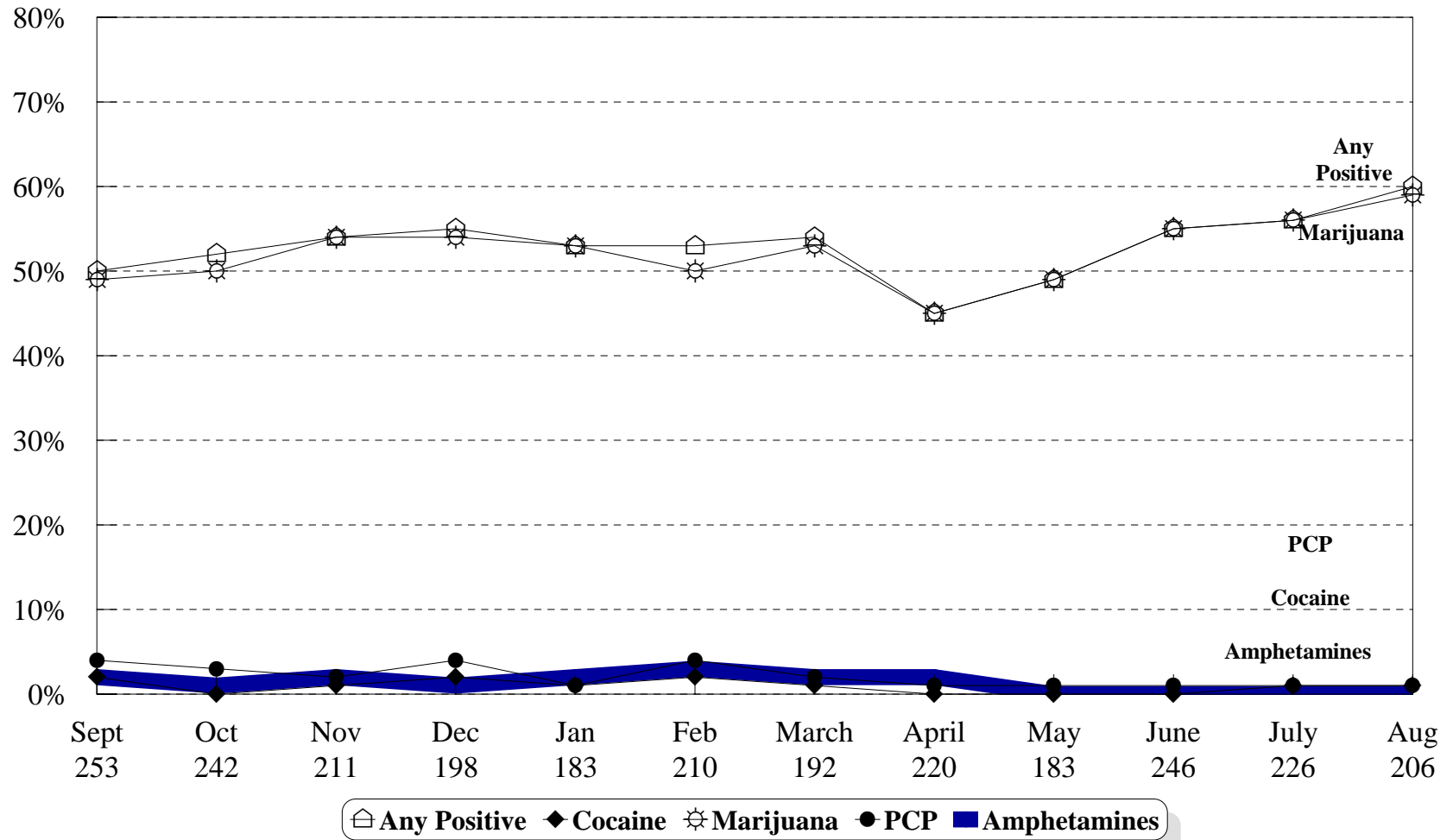
	<b>Of the 24 Community Cases</b>	<b>Of the 182 Lockup Cases</b>	<b>Of the 206 Combined Cases</b>	<b>Of the 124 Positive Cases</b>
<b>Multi Positive</b>	<b>0</b>	<b>2 (1%)</b>	<b>2 (1%)</b>	<b>2 (2%)</b>
<b>Cocaine Positive</b>	<b>0</b>	<b>2 (1%)</b>	<b>2 (1%)</b>	<b>2 (2%)</b>
<b>Marijuana Positive</b>	<b>14 (58%)</b>	<b>108 (59%)</b>	<b>122 (59%)</b>	<b>122 (98%)</b>
<b>Amphetamines Positive</b>	<b>0</b>	<b>0</b>	<b>0</b>	<b>0</b>
<b>PCP Positive</b>	<b>0</b>	<b>2 (1%)</b>	<b>2 (1%)</b>	<b>2 (2%)</b>

The following breakdown of age groups for both Community and Lockup cases was obtained through the Superior Court's records system and correlated with the respondent's test result information.

<b>Age</b>	<b>No. of Arrestees Tested</b>	<b>No. Positive for Any Drug</b>	<b>% Positive For Any Drug</b>
<b>10</b>	<b>1</b>	<b>0</b>	<b>0%</b>
<b>11</b>	<b>3</b>	<b>0</b>	<b>0%</b>
<b>12</b>	<b>1</b>	<b>0</b>	<b>0%</b>
<b>13</b>	<b>10</b>	<b>3</b>	<b>30%</b>
<b>14</b>	<b>25</b>	<b>11</b>	<b>44%</b>
<b>15</b>	<b>40</b>	<b>22</b>	<b>55%</b>
<b>16</b>	<b>63</b>	<b>44</b>	<b>70%</b>
<b>17</b>	<b>55</b>	<b>37</b>	<b>67%</b>
<b>18-19</b>	<b>7</b>	<b>6</b>	<b>86%</b>
<b>Over 19</b>	<b>1</b>	<b>1</b>	<b>100%</b>

# Drug Testing of Juvenile Respondents

September 2008 - August 2009



This data reflects results of the drug test conducted prior to the juvenile's initial court hearing.