



PRETRIAL SERVICES AGENCY *for the* DISTRICT of COLUMBIA

CLIFFORD T. KEENAN, Esq.
Director

LESLIE C. COOPER, Esq.
Deputy Director

633 Indiana Avenue, NW
Suite 1120
Washington, DC 20004

(202) 220-5500

www.PSA.gov

MEMORANDUM

TO: Interested Parties

FROM: Clifford T. Keenan *Clifford T. Keenan*

DATE: October 7, 2016

RE: **September 2016 Drug Testing Statistics**

Drug testing of adult arrestees for September 2016 remained the same compared to the previous month in the overall positive test rate. PCP use increased by 6% compared to last month.

If you have any questions or need additional information, please contact us at contact@psa.gov. Historical reports dating to 1996 can be accessed at www.psa.gov in the Reading Room, which can be accessed under the “Resources” tab.

The breakdown of September 2016 adult test results is as follows:

No. Tests/No. Positive	August 2016		September 2016	
	As % of All Tests	As % of All Positives	As % of All Tests	As % of All Positives
Multi-Drug Positive	108 (6%)	108 (21%)	85 (5%)	85 (19%)
Cocaine Positive	268 (15%)	268 (53%)	225 (14%)	225 (50%)
Opiates Positive	134 (7%)	134 (26%)	108 (7%)	108 (24%)
Amphetamines Positive	23 (1%)	23 (5%)	20 (1%)	20 (4%)
PCP Positive	161 (9%)	161 (32%)	173 (11%)	173 (38%)
Heroin Positive	19 (1%)	19 (4%)	9 (1%)	9 (2%)
Synthetic Cannabinoid Positive	4 (<1%)	4 (1%)	3 (<1%)	3 (1%)

September 2016 Tests	
All Negative	1170 72%
Any Positive	454 28%
Total	1624 100%

EXECUTIVE COMMITTEE

HON. ERIC T. WASHINGTON
Chair
Chief Judge
District of Columbia
Court of Appeals

HON. MERRICK B. GARLAND
Chief Judge
United States Court of Appeals
for the District of Columbia
Circuit

HON. BERYL A. HOWELL
Chief Judge
United States District Court
for the District of Columbia

HON. ROBERT E. MORIN
Chief Judge
Superior Court of the
District of Columbia

HON. NANCY M. WARE
Director
Court Services and
Offender Supervision Agency
for the District of Columbia

HON. CHANNING D. PHILLIPS,
ESQ.
United States Attorney
for the District of Columbia

AVIS E. BUCHANAN, ESQ.
Director
Public Defender Service
for the District of Columbia

September 2016 Juvenile Drug Testing Statistics

The positive rate for juvenile drug testing for September 2016 (both lockup and community cases) decreased by 15% compared to last month.

	August 2016		September 2016	
Number Tested/ Number Positive	110/52	(47%)	85/27	(32%)
Multi-Drug Positive	1	(1%)	0	(0%)
Cocaine Positive	1	(1%)	1	(1%)
Marijuana Positive	52	(47%)	26	(31%)
PCP Positive	1	(1%)	0	(0%)

The Juvenile Drug Testing Unit tested 85 respondents prior to their appearance in September 2016. Of the 78 lockup cases, 24 (31%) tested positive for marijuana. Of the 7 community cases, 2 (29%) tested positive for marijuana.

	Community		Lockup		Combined	
All Negative	5	(71%)	53	(68%)	58	(68%)
Any Positive	2	(29%)	25	(32%)	27	(32%)
Total	7	(100%)	78	(100%)	85	(100%)

	Of the 7 Community Cases		Of the 78 Lockup Cases		Of the 85 Combined Cases		Of the 27 Positive Cases	
Multi-Drug Positive	0	(0%)	0	(0%)	0	(0%)	0	(0%)
Cocaine Positive	0	(0%)	1	(1%)	1	(1%)	1	(4%)
Marijuana Positive	2	(29%)	24	(31%)	26	(31%)	26	(96%)
PCP Positive	0	(0%)	0	(0%)	0	(0%)	0	(0%)

The following breakdown of age groups for both community and lockup cases was obtained through the Superior Court's records system, and correlated with the respondent's test result information.

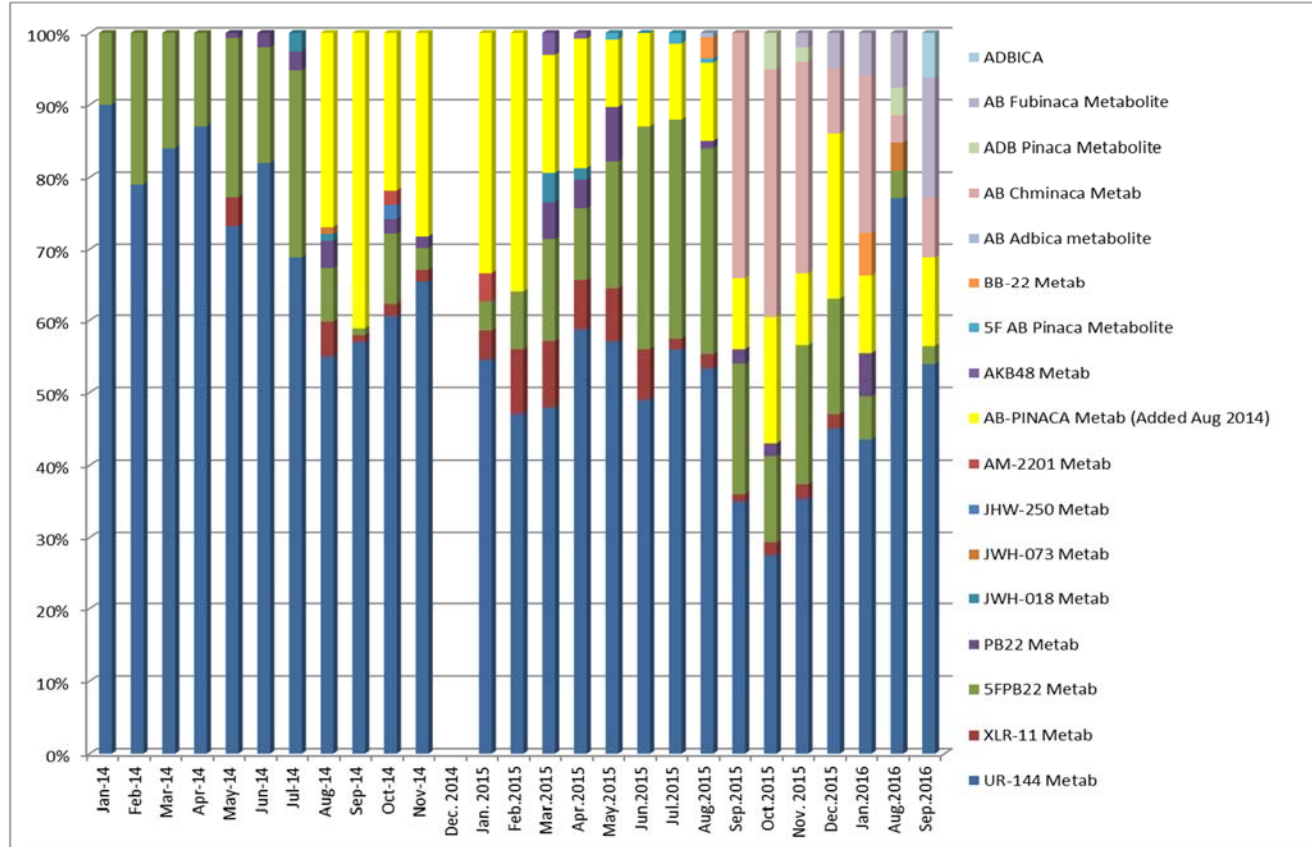
Age	Number of Arrestees Tested	Number Positive for Any	% Positive for Any Drug
8	0	0	0%
9	0	0	0%
10	0	0	0%
11	0	0	0%
12	2	0	0%
13	7	1	14%
14	10	0	0%
15	16	4	25%
16	23	11	48%
17	22	7	32%
18-19	5	4	80%
Totals	85	27	32%

Synthetic Cannabinoid Testing Results for September 2016*

September 2016		
Positives	44	41%
Negatives	62	58%
Total	106	100%

	Number of Positives*	Percentage of total samples	Percentage of Positive Samples
AB Pinaca Metabolites	6	5.66%	13.63%
UR-144 Metabolites	26	24.52%	59.09%
5FP22 Metabolites	1	.94%	2.72%
AB Chminaca Metabolite	4	3.77%	9.09%
AB Fubinaca Metabolite	8	7.54%	18.18%
JWH 073	0	0%	0%
ADBICA	3	2.83%	6.81%

Tests were performed by LC/MS/MS.



* These samples were obtained from the pretrial, parole/probation, and juvenile populations. The samples have been preselected by staff or court for testing due to suspected use by the contributor.

Drug Testing of Adult Arrestees October 2015 - September 2016

