



**PRETRIAL SERVICES AGENCY**  
*for the DISTRICT of COLUMBIA*

CLIFFORD T. KEENAN, Esq.  
*Director*

LESLIE C. COOPER, Esq.  
*Deputy Director*

633 Indiana Avenue, NW  
Suite 1120  
Washington, DC 20004

(202) 220-5500

www.PSA.gov

**MEMORANDUM**

TO: Interested Parties

FROM: Clifford T. Keenan *Clifford T. Keenan*

DATE: January 9, 2017

RE: **December 2016 Drug Testing Statistics**

Drug testing of adult arrestees for December 2016 decreased by 3% in the overall positive test rate. PCP use increased by 5% compared to last month.

If you have any questions or need additional information, please contact us at [contact@psa.gov](mailto:contact@psa.gov). Historical reports dating to 1996 can be accessed at [www.psa.gov](http://www.psa.gov) in the Reading Room, which can be accessed under the “Resources” tab.

The breakdown of December 2016 adult test results is as follows:

No. Tests/No. Positive	November 2016		December 2016	
	As % of All Tests	As % of All Positives	As % of All Tests	As % of All Positives
Multi-Drug Positive	82 (5%)	82 (19%)	74 (5%)	74 (19%)
Cocaine Positive	213 (14%)	213 (49%)	177 (12%)	177 (46%)
Opiates Positive	95 (6%)	95 (22%)	89 (6%)	89 (23%)
Amphetamines Positive	22 (1%)	22 (5%)	20 (1%)	20 (5%)
PCP Positive	132 (9%)	132 (30%)	135 (9%)	135 (35%)
Heroin Positive	8 (1%)	8 (2%)	12 (1%)	12 (3%)
Synthetic Cannabinoid Positive	15 (1%)	15 (3%)	9 (1%)	9 (2%)

December 2016 Tests	
All Negative	1085 74%
Any Positive	381 26%
Total	1466 100%

EXECUTIVE COMMITTEE

HON. ERIC T. WASHINGTON  
*Chair*  
*Chief Judge*  
*District of Columbia*  
*Court of Appeals*

HON. MERRICK B. GARLAND  
*Chief Judge*  
*United States Court of Appeals*  
*for the District of Columbia*  
*Circuit*

HON. BERYL A. HOWELL  
*Chief Judge*  
*United States District Court*  
*for the District of Columbia*

HON. ROBERT E. MORIN  
*Chief Judge*  
*Superior Court of the*  
*District of Columbia*

HON. NANCY M. WARE  
*Director*  
*Court Services and*  
*Offender Supervision Agency*  
*for the District of Columbia*

HON. CHANNING D. PHILLIPS,  
ESQ.  
*United States Attorney*  
*for the District of Columbia*

AVIS E. BUCHANAN, ESQ.  
*Director*  
*Public Defender Service*  
*for the District of Columbia*

**December 2016 Juvenile Drug Testing Statistics**

The positive rate for juvenile drug testing for December 2016 (both lockup and community cases) remained the same compared to last month.

	<b>November 2016</b>		<b>December 2016</b>	
Number Tested/ Number Positive	75/42	(56%)	62/35	(56%)
Multi-Drug Positive	0	(0%)	1	(2%)
Cocaine Positive	0	(0%)	0	(0%)
Marijuana Positive	42	(56%)	35	(56%)
PCP Positive	0	(0%)	0	(0%)

The Juvenile Drug Testing Unit tested 62 respondents prior to their appearance in December 2016. Of the 62 lockup cases, 35 (56%) tested positive for marijuana. No community cases were tested for the month of December.

	<b>Community</b>		<b>Lockup</b>		<b>Combined</b>	
All Negative	0	(0%)	27	(44%)	27	(44%)
Any Positive	0	(0%)	35	(56%)	35	(56%)
Total	0	(0%)	62	(100%)	62	(100%)

	<b>Of the 0 Community Cases</b>		<b>Of the 62 Lockup Cases</b>		<b>Of the 62 Combined Cases</b>		<b>Of the 35 Positive Cases</b>	
Multi-Drug Positive	0	(0%)	0	(0%)	0	(0%)	0	(0%)
Cocaine Positive	0	(0%)	0	(0%)	0	(0%)	0	(0%)
Marijuana Positive	0	(0%)	42	(56%)	42	(56%)	42	(100%)
PCP Positive	0	(0%)	0	(0%)	0	(0%)	0	(0%)

The following breakdown of age groups for both community and lockup cases was obtained through the Superior Court's records system, and correlated with the respondent's test result information.

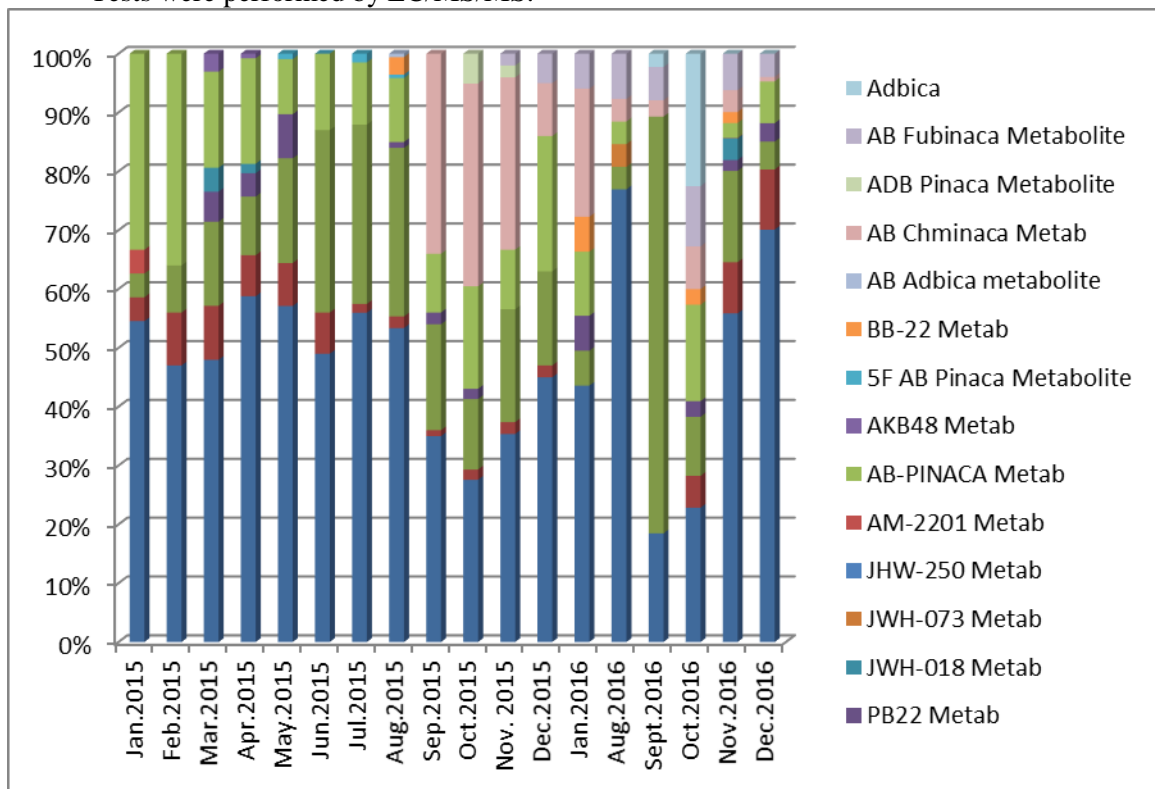
<b>Age</b>	<b>Number of Arrestees Tested</b>	<b>Number Positive for Any</b>	<b>% Positive for Any Drug</b>
8	0	0	0%
9	0	0	0%
10	0	0	0%
11	0	0	0%
12	0	0	0%
13	5	2	40%
14	11	4	36%
15	15	10	67%
16	12	8	67%
17	17	9	53%
18-19	2	2	100%
Totals	62	35	56%

### Synthetic Cannabinoid Testing Results for December 2016\*

December 2016		
Positives	68	97.15%
Negatives	2	2.85%
Total	70	100%

	Number of Positives	Percentage of total samples	Percentage of Positive Samples
AB Pinaca Metabolites	6	8.57%	8.82%
UR-144 Metabolites	61	87.14%	89.71%
5FPB22 Metabolites	6	8.57%	8.82%
AB Chminaca Metabolite	1	1.43%	1.47%
AB Fubinaca Metabolite	4	5.71%	5.88%
XLR-11	9	12.86%	13.24%
PB22 Metabolite	3	4.29%	4.41%
BB22-3 Metabolite	1	1.43%	1.47%

Tests were performed by LC/MS/MS.



\* These samples were obtained from the pretrial, parole/probation, and juvenile populations. The samples have been preselected by staff or court for testing due to suspected use by the contributor.

