



PRETRIAL SERVICES AGENCY for the DISTRICT of COLUMBIA

CLIFFORD T. KEENAN, Esq.
Director

LESLIE C. COOPER, Esq.
Deputy Director

633 Indiana Avenue, NW
Suite 1120
Washington, DC 20004

(202) 220-5500

www.PSA.gov

MEMORANDUM

TO: Interested Parties

FROM: Clifford T. Keenan 

DATE: September 10, 2015

RE: August 2015 Drug Testing Statistics

EXECUTIVE COMMITTEE

HON. ERIC T. WASHINGTON
Chair
Chief Judge
District of Columbia
Court of Appeals

HON. MERRICK B. GARLAND
Chief Judge
United States Court of Appeals
for the District of Columbia
Circuit

HON. RICHARD W. ROBERTS
Chief Judge
United States District Court
for the District of Columbia

HON. LEE F. SATTERFIELD
Chief Judge
Superior Court of the
District of Columbia

HON. NANCY M. WARE
Director
Court Services and
Offender Supervision Agency
for the District of Columbia

VINCENT H. COHEN, JR., Esq.
Acting United States Attorney
for the District of Columbia

AVIS BUCHANAN, Esq.
Director
Public Defender Service
for the District of Columbia

August 2015 Adult Drug Test Statistics

Drug testing results of adult arrestees for August 2015 remained consistent with last month in the overall positive test rate.

If you have any questions or need additional information, please contact us at contact@psa.gov. Historical reports dating to 1996 can be accessed at www.psa.gov in the Reading Room, which can be accessed under the "Resources" tab.

The breakdown of August 2015 adult test results is as follows:

| No. Tests/No. Positive | July 2015 | | August 2015 | |
|------------------------|-------------------|-----------------------|-------------------|-----------------------|
| | As % of All Tests | As % of All Positives | As % of All Tests | As % of All Positives |
| Multi-Drug Positive | 77 (5%) | 77 (19%) | 82 (5%) | 82 (21%) |
| Cocaine Positive | 192 (12%) | 192 (48%) | 200 (12%) | 200 (51%) |
| Opiates Positive | 114 (7%) | 114 (28%) | 116 (7%) | 116 (29%) |
| Amphetamines Positive | 25 (2%) | 25 (6%) | 17 (1%) | 17 (4%) |
| PCP Positive | 148 (9%) | 148 (37%) | 144 (9%) | 144 (37%) |

| August 2015 Tests | |
|-------------------|-----------|
| All Negative | 1225 76% |
| Any Positive | 394 24% |
| Total | 1619 100% |

August 2015 Juvenile Drug Testing Statistics

The positive rate for juvenile drug testing for August 2015 (both lockup and community cases) was up by 4% when compared to last month.

| | July 2015 | | August 2015 | |
|--------------------------------|------------------|-------|--------------------|-------|
| Number Tested/ Number Positive | 82/33 | (40%) | 79/35 | (44%) |
| Multi-Drug Positive | 0 | (0%) | 0 | (0%) |
| Cocaine Positive | 0 | (0%) | 0 | (0%) |
| Marijuana Positive | 33 | (40%) | 35 | (44%) |
| PCP Positive | 0 | (0%) | 0 | (0%) |

The Juvenile Drug Testing Unit tested 79 respondents prior to their appearance in August. Of the 74 lockup cases, 32 (43%) tested positive for marijuana. Of the 5 community cases, 3 (60%) tested positive for marijuana.

| | Community | | Lockup | | Combined | |
|--------------|------------------|--------|---------------|--------|-----------------|--------|
| All Negative | 2 | (40%) | 42 | (57%) | 44 | (56%) |
| Any Positive | 3 | (60%) | 32 | (43%) | 35 | (44%) |
| Total | 5 | (100%) | 74 | (100%) | 79 | (100%) |

| | Of the 5 Community Cases | | Of the 74 Lockup Cases | | Of the 79 Combined Cases | | Of the 35 Positive Cases | |
|---------------------|---|-------|---------------------------------------|-------|---|-------|---|--------|
| Multi-Drug Positive | 0 | (0%) | 0 | (0%) | 0 | (0%) | 0 | (0%) |
| Cocaine Positive | 0 | (0%) | 0 | (0%) | 0 | (0%) | 0 | (0%) |
| Marijuana Positive | 3 | (60%) | 32 | (43%) | 35 | (44%) | 35 | (100%) |
| PCP Positive | 0 | (0%) | 0 | (0%) | 0 | (0%) | 0 | (0%) |

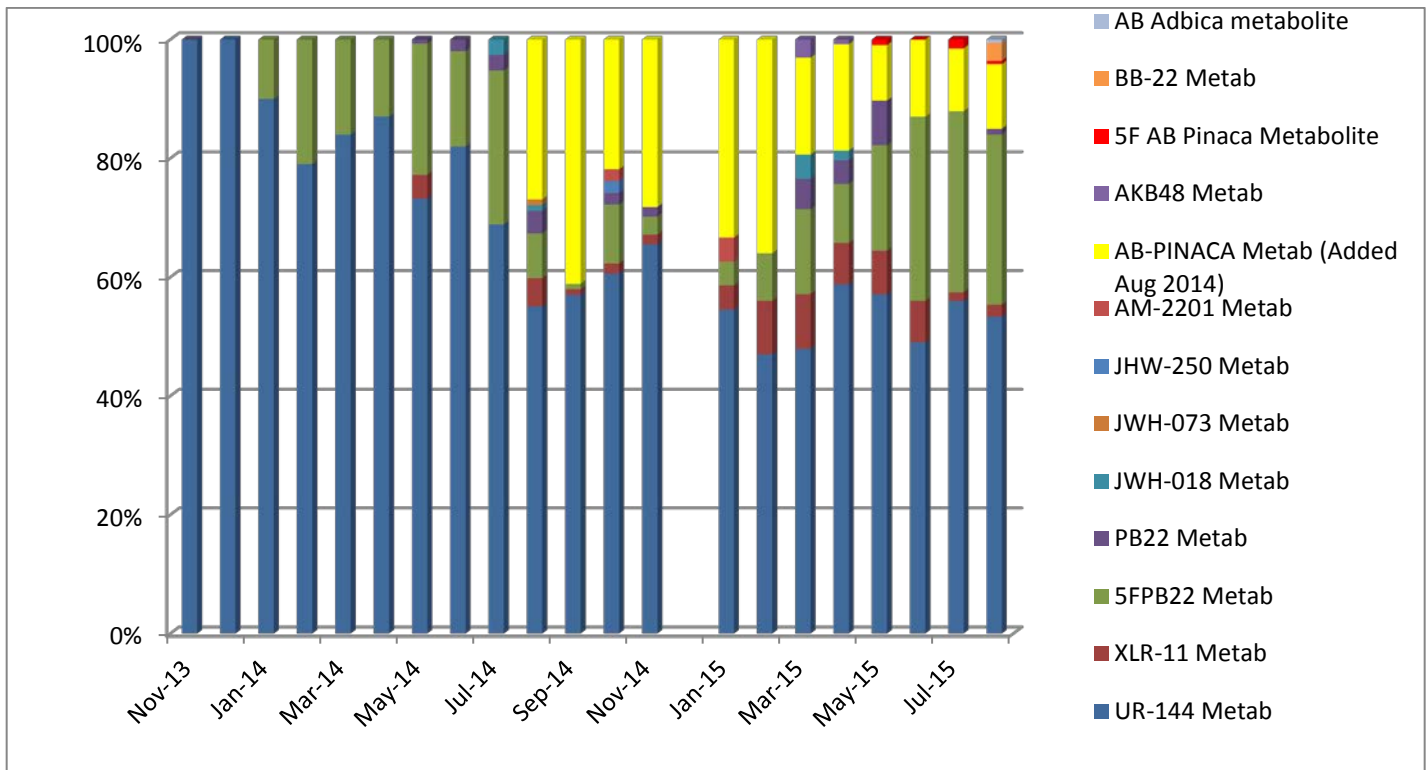
The following breakdown of age groups for both community and lockup cases was obtained through the Superior Court's records system, and correlated with the respondent's test result information.

| Age | Number of Arrestees Tested | Number Positive for Any | % Positive for Any Drug |
|---------------|-----------------------------------|--------------------------------|--------------------------------|
| 8 | 0 | 0 | 0% |
| 9 | 0 | 0 | 0% |
| 10 | 0 | 0 | 0% |
| 11 | 1 | 0 | 0% |
| 12 | 1 | 0 | 0% |
| 13 | 6 | 0 | 0% |
| 14 | 14 | 3 | 21% |
| 15 | 20 | 10 | 50% |
| 16 | 15 | 9 | 60% |
| 17 | 19 | 11 | 58% |
| 18-19 | 2 | 2 | 100% |
| Over 19 | 1 | 0 | 0% |
| Totals | 79 | 35 | 44% |

Synthetic Cannabinoid Testing Results for August 2015*

| August 2015 | | |
|-------------|-----|------|
| Positives | 99 | 49% |
| Negatives | 103 | 51% |
| Total | 204 | 100% |

| | Number of Positives* | Percentage of total samples | Percentage of Positive Samples |
|-------------------------|----------------------|-----------------------------|--------------------------------|
| AB Pinaca Metabolites | 19 | 9% | 11% |
| UR-144 Metabolites | 97 | 48% | 54% |
| BB-22 Metabolite | 5 | 2% | 3% |
| 5FP22 Metabolite | 52 | 25% | 29% |
| XLR Metabolite | 3 | 1.5% | 2% |
| PB-22 Metabolite | 2 | 1% | 1% |
| 5F AB Pinaca Metabolite | 1 | .5% | .6% |
| AB Adbica Metabolite | 1 | .5% | .6% |



* These samples were obtained from the pretrial, parole/probation, and juvenile populations. The samples have been preselected by staff or the court for testing due to suspected use by the contributor.

Drug Testing of Adult Arrestees August 2014 - August 2015

